



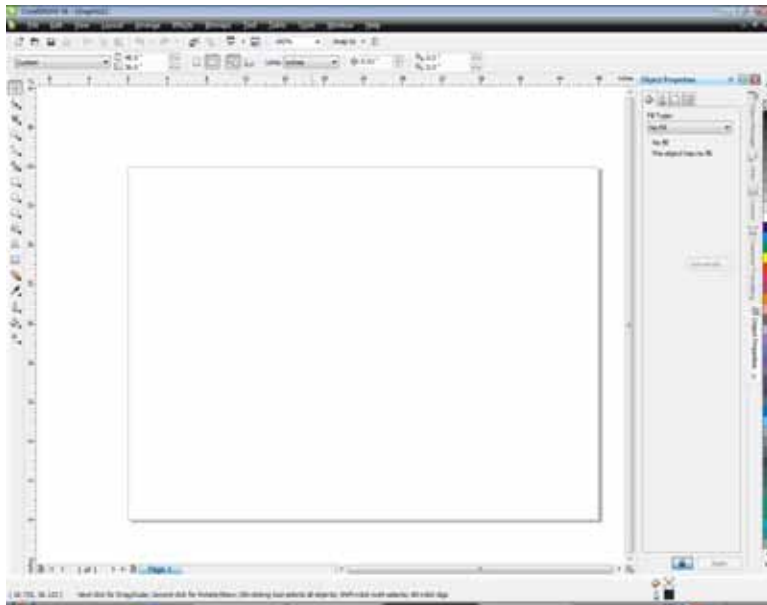
Using Multiple Tiles to Create Large Engraved Murals

***Epilog Laser
16371 Table Mountain Parkway
Golden, CO 80403
303-277-1188 - voice
303-277-9669 - fax
www.epiloglaser.com***

Engraving murals with tiles

Engraving murals is an easy way to create really large images even if you only have a small work area on your laser system. By engraving a number of tiles and putting them together you can create images that you would never be able to do in a single piece.

This procedure shows you the simple steps involved in creating murals. It is written using Corel X4, but the process is the same for older versions of Corel. This process will show you how to set up a mural that has a finished size of 48 x 36 inches (4 feet x 3 feet). It uses 12 tiles (4 across x 3 down) that are each 12" x 12" in size. You can use this procedure to create images of almost any size and any number of tiles.



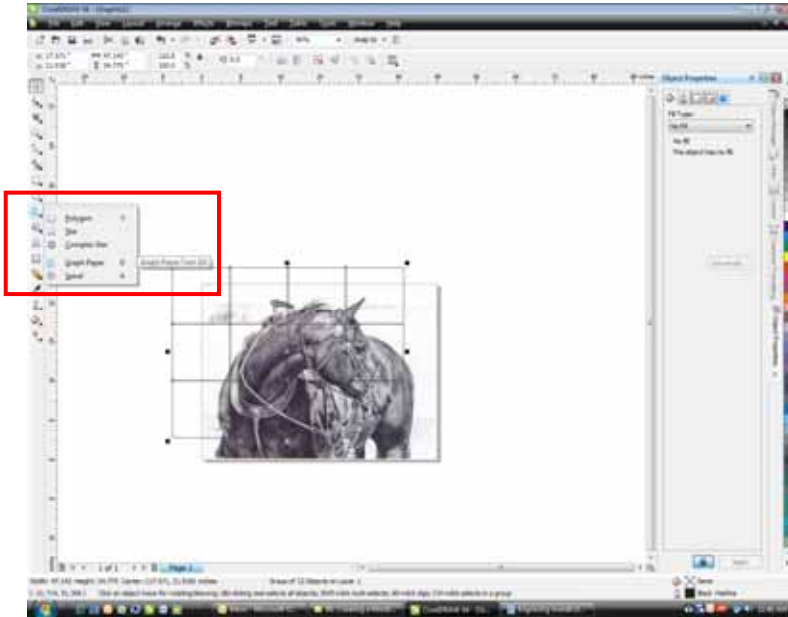
Create a page in Corel that equals the finished size of the mural – in this example 48 x 36 inches.

Import your artwork then size and place it so that it utilizes as much of the area the 48 x 36 inches as you need. In our example we are going to use almost all of the 48 x 36 inch area.

Note: If you are using a bitmap (jpg, tiff, etc) you run the risk of stretching it so much that it becomes severely distorted. Simply stretching an image by dragging a corner in Corel will not produce an acceptable bitmap image for engraving.

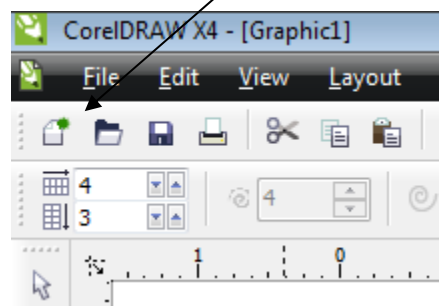
The process of properly enlarging a bitmap is detailed in our "Preparing Photos for Laser Engraving" procedure.





Next, use the Graph Paper tool to create a grid that is 4 across and 3 down. At this point, don't worry about its exact size or placement.

With the Graph Tool selected your options bar will change and you can define the number of rows and columns you want.



NOTE! – The Graph Paper tool is a little tricky because it is accessed from the Polygon Tool fly out. In Corel X4 many users go straight to the Table Tool in the Corel tool bar because it looks just like the Graph Paper tool. The Table Tool will not work for this application. The following images show the location of the Graph Paper tool and the Table tool.

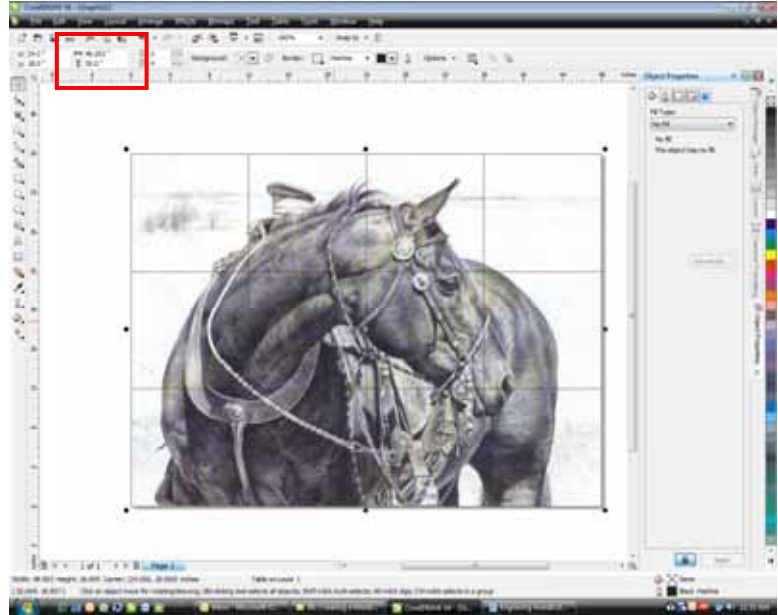
Click on the Polygon tool fly out to access the Graph Paper tool.

The Table tool will not work for this application.

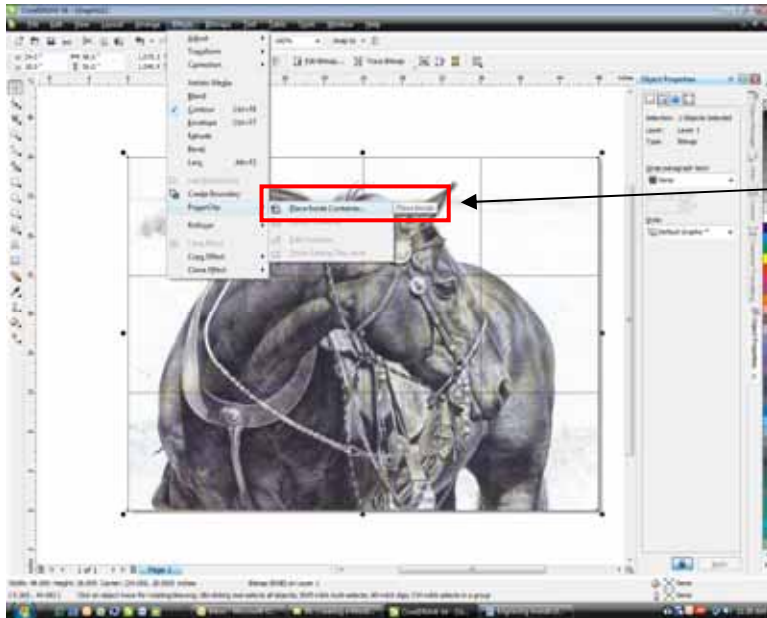


Now, select your grid and use the Object Size boxes to change the size of the grid to match your page size (48 x 36 inches).

After setting the grid size, press the P key on your keyboard. This will place the center of the grid at the center of your page.



At this point, we have the grid and our artwork set up how we want them. Next, we'll use the PowerClip tool in Corel to place the artwork inside the grid so that we can then break the grid into 12 different tiles.



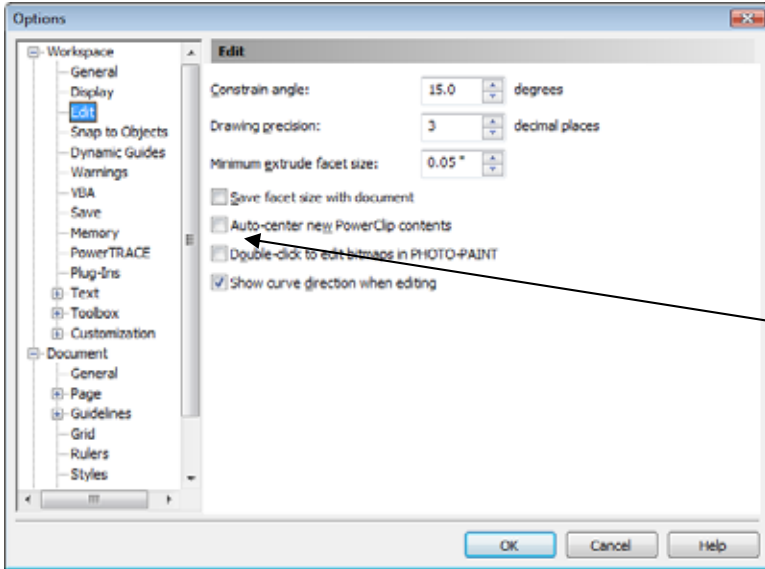
Select just your artwork (not the grid). Make sure you have everything selected if you have multiple objects. Go to Effects | PowerClip | and click on Place inside Container.

An arrow will appear. Place the arrow on any grid line and click. You now have a PowerClip Group.



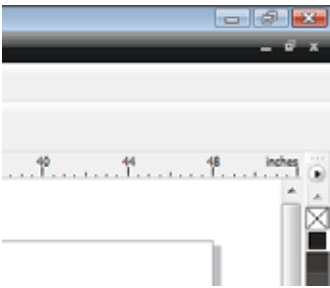
With the image still selected, use the Ungroup tool to ungroup the grid. Select one of the tiles and move it so make sure the grid is ungrouped. This will also show that you have 12 separate tiles ready to engrave.

Note: Corel uses a default that automatically centers your image to the center of the grid. This may cause problems for this application.



To turn off Auto-Centering in PowerClip mode go to:
Tools | Options.
Expand Workspace and click on Edit.
Deselect the Auto-center box.
Click Okay.

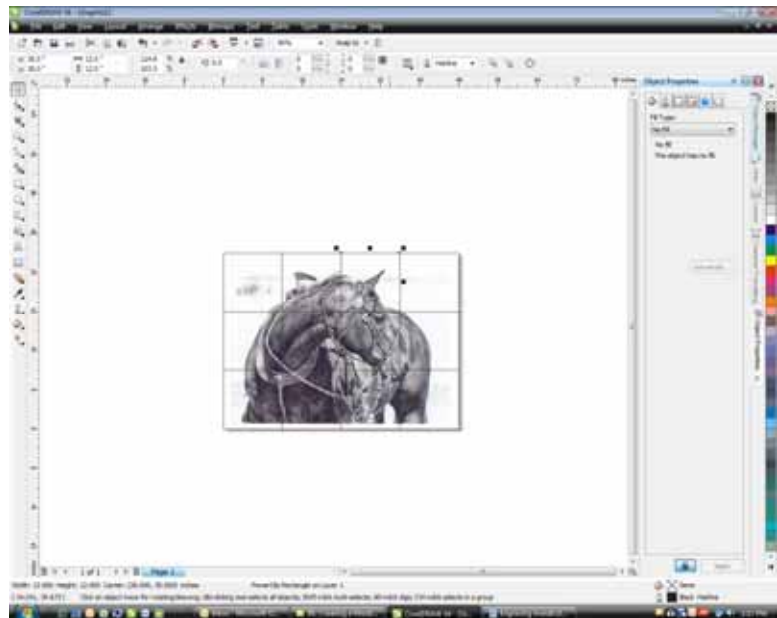
At this point, there's one important step you need to take. The grid was created with an outline. Usually you will not want the outlines to engrave. Select all of the tiles and delete the grid lines.



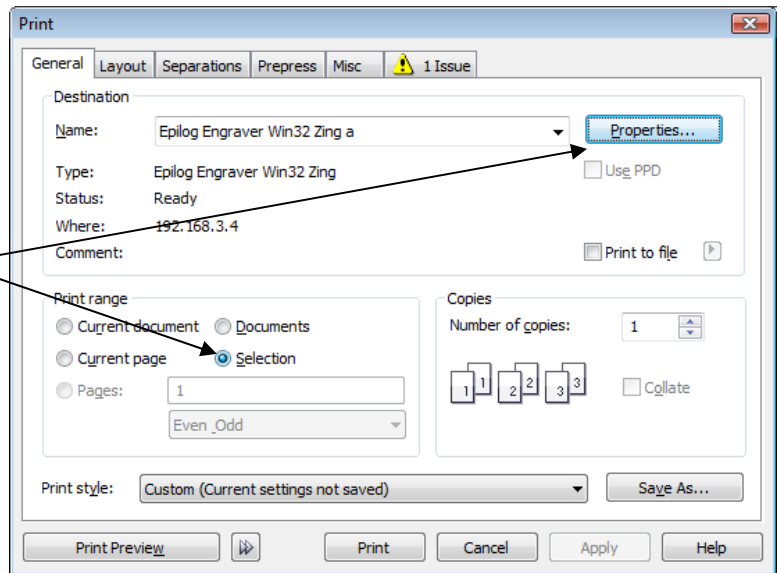
To delete the grid lines click your right mouse button on the X box in your color palette.

We're now ready to print.

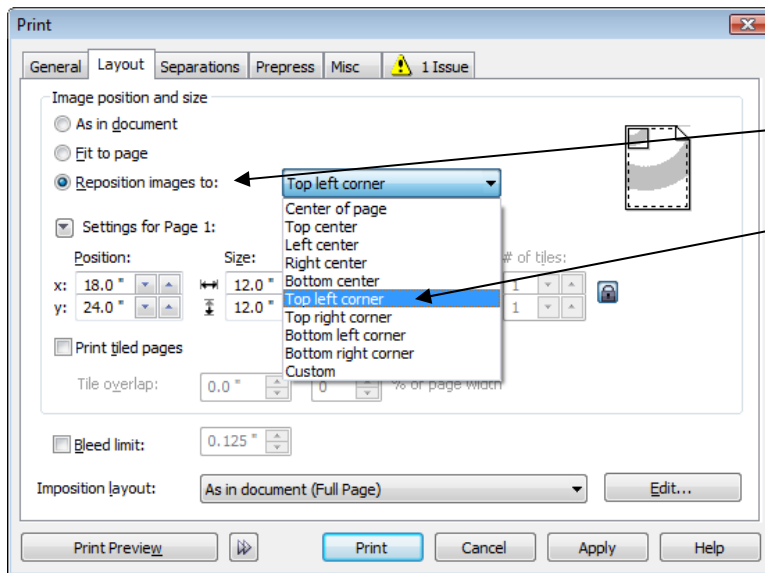
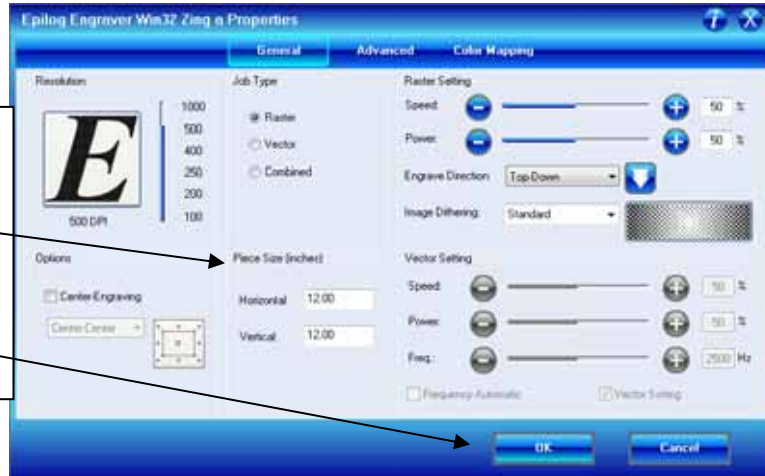
Select any one of the tiles.
We've selected the third one
across in the top row (we've left
the grid line on because it's
easier to show the next steps).
Use Ctrl + P to go to the Print
window.



We've selected one of the tiles
in Corel. Click on Selection in
the Print Range box.
Go to Properties.



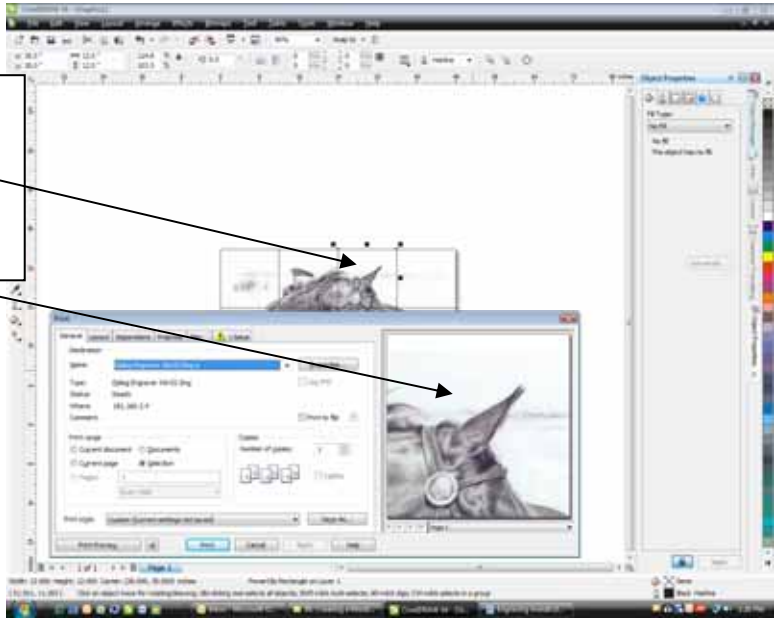
Set your Piece Size to match the individual tile size – in this example each tile is 12 x 12 inches.
Set your other laser parameters and click on OK.



In the Print window, go into the Layout tab. Click on the Reposition Images to:

Then select Top left corner from the fly out menu.

With *Print Preview* turned on you can see that the tile we selected in Corel is the tile that will be printed (notice the ears).



That's it! Once you press Print, the individual tile will be printed to your laser. All you have to do is place a 12 x 12 inch tile in the upper left corner of your laser system, focus and start the job. When it is finished engraving, select the next tile you want to engrave and follow the same print procedure.

Quick Start Steps for Murals:

- 1) Measure your tile to determine its size (in our example we are using 12 x 12 inch tiles)
- 2) Determine how many tiles you need going across and how many going down (4 across by 3 down = a total of 12 tiles).
- 3) Use the tile size to determine the overall dimensions of the finished mural (in our example – 4 tiles x 12 inches = 48 inches across, 3 tiles x 12 inches = 36 inches down).
- 4) Create a page that equals the finished size of the mural (48 x 36 inches).
- 5) Import, create or open your artwork.
- 6) Size and place artwork on the page.
- 7) Use the Graph Paper tool (do not use the Table tool in Corel X4) to create a grid (4 across by 3 down).
- 8) Size the grid.
- 9) Center the grid.
- 10) Select just your artwork.
- 11) In the Corel Menu Bar click on Effects | PowerClip | Place inside container
- 12) With the PowerClip arrow, click on any one of the grid lines.
- 13) Ungroup
- 14) Delete grid lines

- 15) Select a single tile
- 16) Print
- 17) In the Print Range box click on Selection
- 18) In the Epilog driver properties make your Piece Size match the individual tile size (12 x 12 for our example).
- 19) Go to the Layout tab.
- 20) Select Reposition images to...
- 21) Select Top Left Center.
- 22) Look at the Preview window. If everything looks good, finish printing.

That's it! It seems like a long procedure, but it's really quite easy.